

Versa-Nut[®]



Versa-Nut rivet nuts are designed for blind-sided use in soft materials, plastics and composites. Versa-Nut rivet nuts have a higher pull out and torque-to-turn resistance than most alternative blind rivet nuts. The rivet nut's higher strength allows designers to reduce the size or number of fasteners in an assembly and because it features a grip range far greater than that of a standard rivet nut, it suits a wide number of applications.



Key features and benefits

- Specially designed for use in soft or weak materials, plastics, composites, or very thin panels
- Large head sizes spread clamp load of assembled joint

Additional benefits against conventional rivet nuts:

- Extra large blind side bearing area after placing offers:
 - Higher pull-out and torque-to-turn resistance
 - Less radial loading of holes in brittle materials
 - Less risk of cracking and de-lamination of composites
- Up to twice the grip range of standard blind rivet nuts:
 - Enables a designer to reduce the size or number of fasteners in an assembly
 - Covers large variations of thicknesses

Specifications

Thread Sizes:

M5 – M8

Material:

Steel

Head Style:

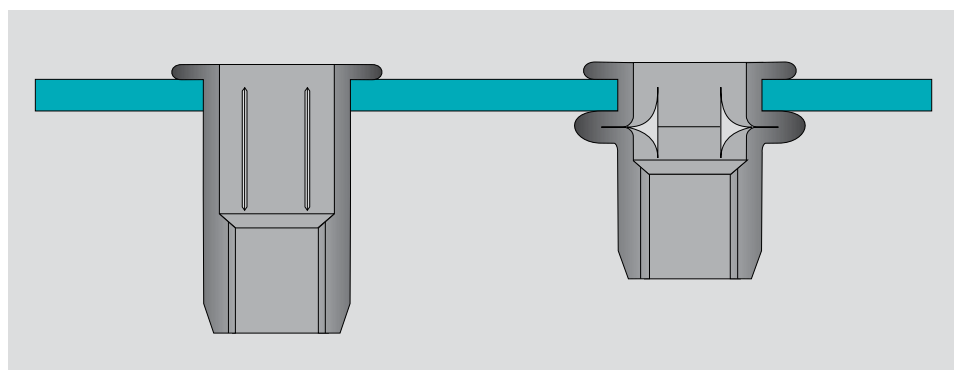
Large flange

Body:

Round

Hole Size:

Imperial



Please visit our website www.StanleyEngineeredFastening.com for fastener placing animations.

Assembly applications

- Blow-molded automotive parts and trim fixings
- Sandwiched sections, and composite panels in truck, bus, caravan and marine interiors
- General composite and plastic sections for toys
- Small domestic appliances
- Containers
- Display panels
- Plastic furniture
- Fiberboard and plywood assemblies



Installation Tools

Tool Selection Guide

This table is designed as a guide to help you select the most suitable tool for your particular rivet nut.

Please note that all tools require fastener specific nose assemblies.

Full technical data can also be found on our website or contact your STANLEY Engineered Fastening representative.

Rivet Nut Type	Thread Size	Power Tools					Hand Tools			
		ProSert® XTN20	74200	PNT1000L PC	74401	74405	PNT110	PNT210	PNT310	PNT410
Eurosert®	M3	•	• ¹⁾		• ¹⁾		•			
	M4	•	• ¹⁾		• ¹⁾		•	•	•	
	M5	•	• ¹⁾		• ¹⁾		•	•	•	•
	M6	•	• ¹⁾	• ¹⁾	• ¹⁾		• ³⁾	•	•	•
	M8	•	• ¹⁾	•	•			•	•	•
	M10	•	•	•	•			•	• ³⁾	•
Nutsert®	M3	•	• ¹⁾		• ¹⁾		•			
	M4	•	• ¹⁾		• ¹⁾		•	•	•	
	M5	•	• ¹⁾		• ¹⁾		•	•	•	•
	M6	•	• ¹⁾	• ¹⁾	• ¹⁾			•	•	•
	M8	•	• ¹⁾	•	•			•	•	•
	M10	•	•	•	•			•	• ³⁾	•
Hexsert® / Euro Hexsert®	M3	•	• ¹⁾		• ¹⁾		•			
	M4	•	• ¹⁾		• ¹⁾		•	•	•	
	M5	•	• ¹⁾		• ¹⁾		•	•	•	•
	M6	•	• ¹⁾	• ¹⁾	• ¹⁾			•	•	•
	M8	•	• ¹⁾	•	•			•	•	•
	M10		•	•	•			•	• ³⁾	•
	M12		•	•				•		• ³⁾
High Strength Hexsert®	M6	•	• ¹⁾	• ¹⁾	• ¹⁾					
	M8	•	• ¹⁾	•	•					
	M10		•	•	•					
	M12		•	•						
Squaresert®	M5	•	• ¹⁾		• ¹⁾			•	•	•
	M6	•	• ¹⁾	• ¹⁾	• ¹⁾			•	•	•
	M8	•	• ¹⁾	•	• ¹⁾			•	•	•
Versa-Nut®	M5	• ²⁾				•				
	M6	• ²⁾		• ¹⁾		•				
	M8	• ²⁾		•		•				
						JNT2200	JNT2400			
JackNut®	M4						•	•		
	M5						•	•		
	M6						•	•		

¹⁾ This model is not preferred for the installation of this thread size

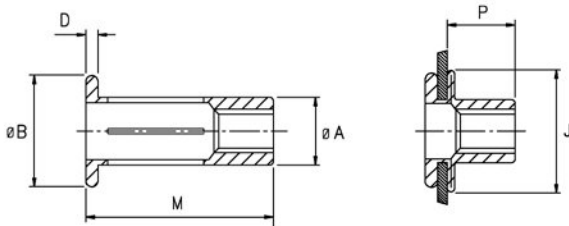
²⁾ Two tool actuations may be needed to fully place the insert

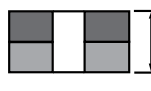
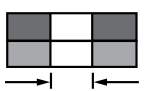
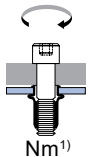
³⁾ No stainless steel



English	Français	Deutsch	Italiano	Español	** / ***
Large flange	A collerette	Flachkopf	Flangiato	Ala ancha	 240 h**/ 96 h***
Slotted body	Corps préfendu	Geschlitzte Hülse	Corpo fessurato	Cuerpo ranurado	
Low carbon steel*	Acier à faible teneur en carbone*	Stahl*	Acciaio a bassoteneur di carbonio*	Acero bajo en carbono*	
Zinc plated	Revêtement zingué	Verzinkt	Zincato	Zincado	
Clear trivalent passivated	Passivation claire trivalente	Klar chromatiert, Cr6-frei	Passivazione chiara trivalente	Pasivado claro trivalente	

* : DIN EN 10263-2 Qst 34-3, BSEN/DIN 10263-2 C8C, Werkstoff 1.0213, SAE 1008
 **: to red rust / à la rouille rouge / bis Rotrost / alla ruggine rossa / al óxido rojo (ASTMB117)
 ***: to white rust / à la rouille blanche / bis Weißrost / alla ruggine bianca / al óxido blanco



Thread filetage / Gewinde / filetto / rosca					ø A	ø B	D	J	M	P	 Nm ¹⁾	Part No/ref
	min.	max.	min.	max.								
M5 x 0.8	0.50	4.45	7.48	7.62	7.47	12.95	1.09	18.0	22.39	12.40	7.9	0VN21-02528
	4.45	8.10							25.16			0VN21-02531
M6 x 1.0	0.50	7.10	8.80	8.93	8.79	16.12	1.63	22.0	27.30	12.80	12.4	0VN21-02634
	7.10	12.70							33.22			0VN21-02641
M8 x 1.25	0.50	7.10	11.11	11.50	11.10	19.29	1.70	26.0	30.92	14.47	32.0	0VN21-02838
	7.10	12.70							36.87			0VN21-02846

all dimensions in mm / en millimètres / alle Maße in mm / in millimetri / en milímetros

1) Recommended maximum torque as applied to a joint with a static top plate. Thread of rivet nut will not be damaged. However this torque value may exceed the strength of the screw or bolt in question. Always refer to the recommended tightening torque limits for the screw or bolt.

Couple maximum recommandé pour un assemblage avec plaque supérieure statique. Le filet de l'insert reste intact. Ce couple peut néanmoins dépasser la résistance de la vis ou du boulon en question. Veuillez toujours à vous référer aux limites de couple de serrage recommandées pour la vis ou le boulon.

Empfohlenes maximales Drehmoment für eine Verbindung bei der das obere an die Mutter anzuschraubende Bauteil fest eingespannt ist. Das Gewinde wird nicht beschädigt. Möglicherweise übersteigt dieser Anzugswert die Festigkeit der Schraube. Beziehen Sie sich immer auf die max. Anzugswerte der Schraube.

Coppia massima raccomandata applicata a una giuntura con piastra superiore statica. La filettatura dell'inserto non verrà danneggiata, comunque questa coppia può superare la resistenza della vite o del bullone impegnato. Verificare sempre le coppie di serraggio raccomandate della vite o bullone impegnato.

Par máximo recomendado aplicado a la unión con la placa superior estática. La rosca del inserto no queda dañada. Sin embargo este valor de par puede superar la resistencia del perno o tornillo en cuestión. Siempre consultar los límites de par de apriete recomendados para el perno o tornillo.

POP® & Avdel® have been producing assembly systems since the 1930s and offer comprehensive ranges of innovative fasteners and installation systems to all market segments and applications. STANLEY Engineered Fastening offers POP Avdel products through Sales, Distribution and Manufacturing facilities in over 150 countries. Covered by the portfolio are:



Breakstem Riveting Systems

Various features from multi-grip capability to high strength stainless steel rivets.



Lockbolt Systems

High clamp force and vibration resistance for the highest strength joints.



Speed Fastening® Systems

Extra fast and reliable fastening from one side. Rivets are fed automatically.



Sealing Plugs

Engineered for both low-pressure and high-pressure hole sealing applications.



Blind Rivet Nuts

Fast system for sustainable threads with high torque-to-turn.



Customised Fastener Designs

Bespoke designs and finishes to meet your unique assembly requirements.



Installation Equipment

From manually operated power tools to customised semi and fully automated assembly workstations and repair tools.

We can also provide you with:



One-stop shopping for the blind riveting distributor market. MasterFix® owes its excellent reputation to the successful distribution of the broadest range of blind rivets and blind rivet nuts in the business.



CRIBMASTER

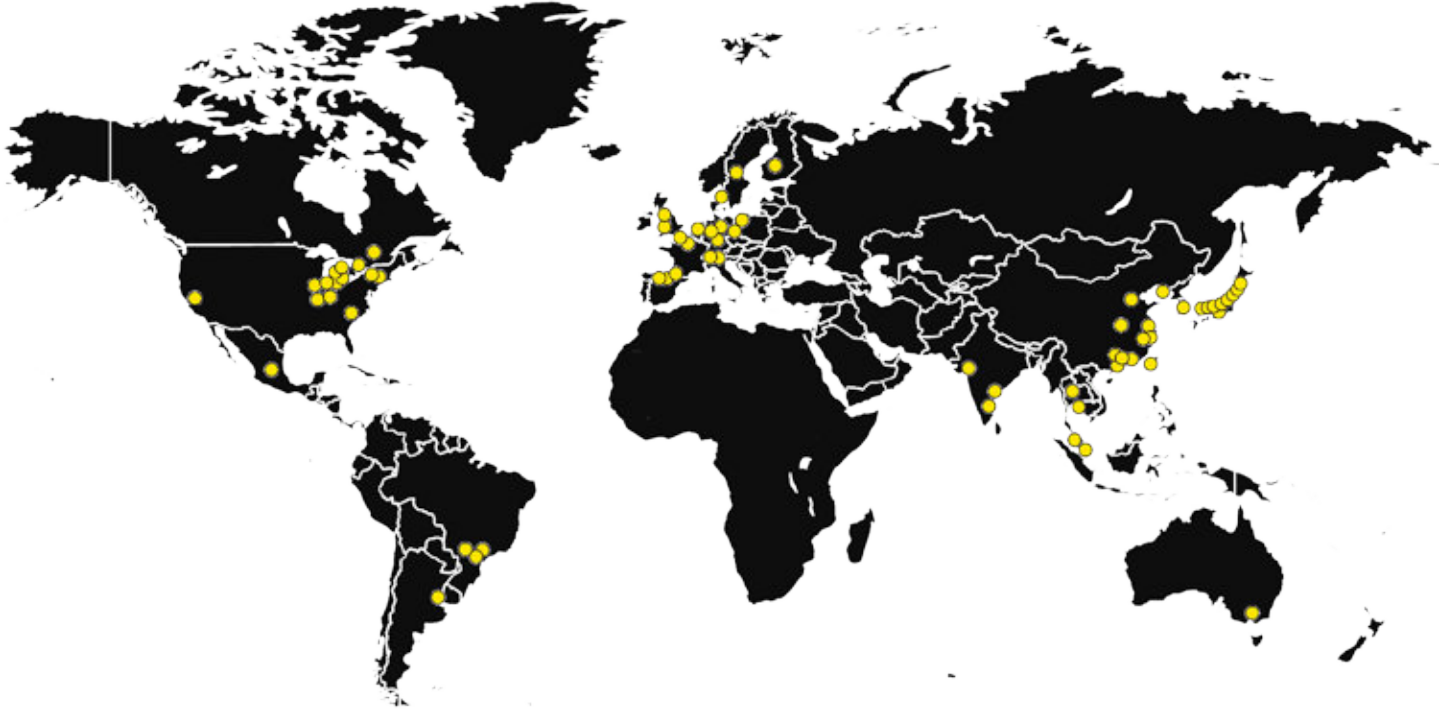


Spirallock® is a technologically superior fastening system ideally suited for threaded joint applications subjected to heavy shock and vibration.



STANLEY®

Engineered Fastening



STANLEY Engineered Fastening, a Stanley Black & Decker Inc. Company has been revolutionising fastening and assembly technologies for a variety of industries for more than 40 years.

For more information, please visit our website
stanleyengineeredfastening.com

Quick Links:

- ▶ **Our locations**
<http://www.stanleyengineeredfastening.com/contact/global-locations>
- ▶ **Request Information**
<http://www.stanleyengineeredfastening.com/econtact/request-information>
- ▶ **Resource Center**
<http://www.stanleyengineeredfastening.com/resource-center>



© 2017 Stanley Black & Decker, Inc., Rev. 11.2017

Autosert®, Avdel®, CribMaster®, Eurosert®, Hexsert®, JackNut®, Masterfix®, Nutsert®, POP®, ProSert®, Spiralock®, Squaresert®, Versa-Nut® and Well-Nut® are registered trademarks of Stanley Black & Decker, Inc. and its affiliates. Rimlex® is a registered trademark of Inlex Locking Limited. Data shown is subject to change without prior notice as a result of continuous product development and improvement policy. Your local STANLEY Engineered Fastening representative is at your disposal should you need to confirm latest information.