



Key features and benefits

- Provides an excellent vibration-isolating effect to absorb vibration and noise
- Ability to seal liquids and gases. Particularly suited for use in low pressure environments
- Exhibits excellent electrical insulation properties
- Large flange feature increases the bearing surface for weaker/thinner materials
- Multiple base materials can be fastened effectively
- Stable fastening strength can be achieved even in a blind hole or deep hole
- Available in a neoprene-rubber as standard or EPDM. Neoprene-rubber offers stable strength and exhibits average levels of all beneficial properties. EPDM is particularly suitable in an outdoor environment where the nut must provide weather resistance, ozone resistance etc.
- Installed when the mating screw is tightened using a screwdriver to recommended torque

Specifications

Thread Sizes:

M3 – M8

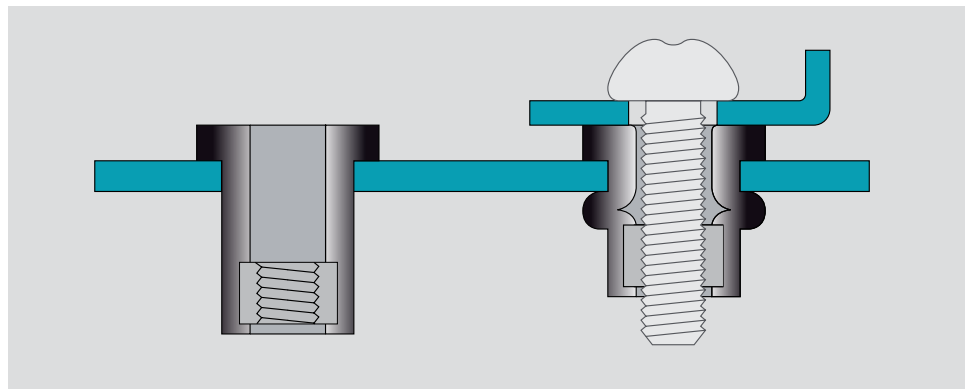
Materials:

Neoprene-rubber,
EPDM option

Head Styles:

Standard flange, large
flange

Typical placing sequence



Assembly applications

- Automotive
- Agriculture machinery
- Recreational vehicles
- Electronic components



Installation Tools

Tool Selection Guide

This table is designed as a guide to help you select the most suitable tool for your particular rivet nut.

Please note that all tools require fastener specific nose assemblies.

Full technical data can also be found on our website or contact your STANLEY Engineered Fastening representative.

Rivet Nut Type	Thread Size	Power Tools					Hand Tools			
		ProSert® XTN20	74200	PNT1000L PC	74401	74405	PNT110	PNT210	PNT310	PNT410
Eurosert®	M3	•	• ¹⁾		• ¹⁾		•			
	M4	•	• ¹⁾		• ¹⁾		•	•	•	
	M5	•	• ¹⁾		• ¹⁾		•	•	•	•
	M6	•	• ¹⁾	• ¹⁾	• ¹⁾		• ³⁾	•	•	•
	M8	•	• ¹⁾	•	•			•	•	•
	M10	•	•	•	•			•	• ³⁾	•
Nutsert®	M3	•	• ¹⁾		• ¹⁾		•			
	M4	•	• ¹⁾		• ¹⁾		•	•	•	
	M5	•	• ¹⁾		• ¹⁾		•	•	•	•
	M6	•	• ¹⁾	• ¹⁾	• ¹⁾			•	•	•
	M8	•	• ¹⁾	•	•			•	•	•
	M10	•	•	•	•			•	• ³⁾	•
Hexsert® / Euro Hexsert®	M3	•	• ¹⁾		• ¹⁾		•			
	M4	•	• ¹⁾		• ¹⁾		•	•	•	
	M5	•	• ¹⁾		• ¹⁾		•	•	•	•
	M6	•	• ¹⁾	• ¹⁾	• ¹⁾			•	•	•
	M8	•	• ¹⁾	•	•			•	•	•
	M10		•	•	•			•	• ³⁾	•
	M12		•	•				•		• ³⁾
High Strength Hexsert®	M6	•	• ¹⁾	• ¹⁾	• ¹⁾					
	M8	•	• ¹⁾	•	•					
	M10		•	•	•					
	M12		•	•						
Squaresert®	M5	•	• ¹⁾		• ¹⁾			•	•	•
	M6	•	• ¹⁾	• ¹⁾	• ¹⁾			•	•	•
	M8	•	• ¹⁾	•	• ¹⁾			•	•	•
Versa-Nut®	M5	• ²⁾				•				
	M6	• ²⁾		• ¹⁾		•				
	M8	• ²⁾		•		•				
						JNT2200	JNT2400			
JackNut®	M4						•	•		
	M5						•	•		
	M6						•	•		

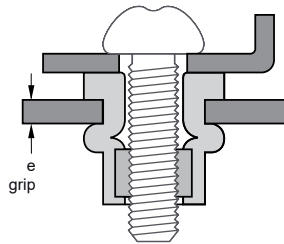
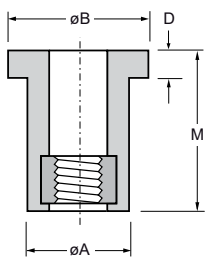
¹⁾ This model is not preferred for the installation of this thread size


²⁾ Two tool actuations may be needed to fully place the insert

³⁾ No stainless steel



English	Français	Deutsch	Italiano	Español
Standard flange	A collerette standard	Standard Flachkopf	Flangiato standard	Ala estándar
Round body	Corps rond	Runder Schaft	Corpo tondo	Cuerpo redondo
Neoprene	Néoprène	Neopren	Neoprene	Neopreno
Brass	Laiton	Kupfer-Zink Legierung	Ottone	Latón



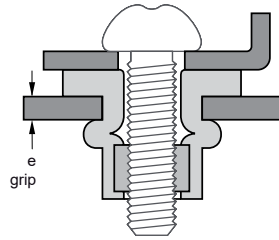
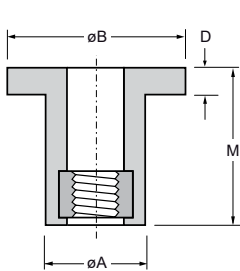
Thread filetage / Gewinde / filetto / rosca	e (grip)			øA	øB	D	M	Tightening Torque ¹⁾ Nm nom.	Part No/ref
	min.	max.							
M3 x 0.5	0.40	4.00	8.10	7.90	11.00	1.20	12.60	0.40	WNPA-0311-E632
M4 x 0.7	0.40	4.00	8.10	7.90	11.00	1.20	12.60	0.30	WNPA-0411-B832
M5 x 0.8	0.40	4.90	9.80	9.60	12.70	0.90	14.10	0.40	WNPA-0514-10S
	0.90	5.90				1.00	17.00	0.50	WNPA-0516-Q1032
	4.00	10.00			14.00	0.90	21.50	0.60	WNPA-0521-H1032
	7.90	15.00				1.30	26.50	0.50	WNPA-0525-10SL
M6 x 1.0	0.40	4.00	12.90	12.70	16.00	1.30	16.00	0.80	WNPA-0615-1/4S
	4.70	8.70					20.30	0.80	WNPA-0619-W1420
	6.40	11.50			16.30	2.00	26.70	0.90	WNPA-0625-J1420
M8 x 1.25	0.40	4.00	16.10	15.90	21.50	3.20	18.30	1.20	WNPA-0815-E51618

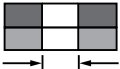
all dimensions in mm / en millimètres / alle Maße in mm / in millimetri / en milímetros

1) couple de serrage / Anzugsdrehmoment / coppia di serraggio / par de apriete



English	Français	Deutsch	Italiano	Español
Large flange	A collerette large	Großer Flachkopf	Flangiato largo	Ala larga
Round body	Corps rond	Runder Schaft	Corpo tondo	Cuerpo redondo
Neoprene	Néoprène	Neopren	Neoprene	Neopreno
Brass	Laiton	Kupfer-Zink Legierung	Ottone	Latón



Thread filetage / Gewinde / filetto / rosca	e (grip)			øA	øB	D	M	Tightening Torque ¹⁾ Nm nom.	Part No/ref
	min.	max.							
M3 x 0.5	9.50	13.00	6.30	6.10	14.00	0.90	24.90	0.40	WNPL-0324-C632
M4 x 0.7	0.40	4.40	8.10	7.90	19.10	1.50	14.20	0.30	WNPL-0413-C832
M5 x 0.8	0.80	5.80	9.80	9.60	19.00	4.70	21.00	0.50	WNPL-0516-G1032
	0.80	5.80				2.00	18.00		WNPL-0516-J1032
M6 x 1.0	0.80	4.70	12.90	12.70	19.10	4.80	21.10	0.90	WNPL-0615-D1420

all dimensions in mm / en millimètres / alle Maße in mm / in millimetri / en milímetros
1) couple de serrage / Anzugsdrehmoment / coppia di serraggio / par de apriete

POP® & Avdel® have been producing assembly systems since the 1930s and offer comprehensive ranges of innovative fasteners and installation systems to all market segments and applications. STANLEY Engineered Fastening offers POP Avdel products through Sales, Distribution and Manufacturing facilities in over 150 countries. Covered by the portfolio are:



Breakstem Riveting Systems

Various features from multi-grip capability to high strength stainless steel rivets.



Lockbolt Systems

High clamp force and vibration resistance for the highest strength joints.



Speed Fastening® Systems

Extra fast and reliable fastening from one side. Rivets are fed automatically.



Sealing Plugs

Engineered for both low-pressure and high-pressure hole sealing applications.



Blind Rivet Nuts

Fast system for sustainable threads with high torque-to-turn.



Customised Fastener Designs

Bespoke designs and finishes to meet your unique assembly requirements.



Installation Equipment

From manually operated power tools to customised semi and fully automated assembly workstations and repair tools.

We can also provide you with:



One-stop shopping for the blind riveting distributor market. MasterFix® owes its excellent reputation to the successful distribution of the broadest range of blind rivets and blind rivet nuts in the business.



CRIBMASTER

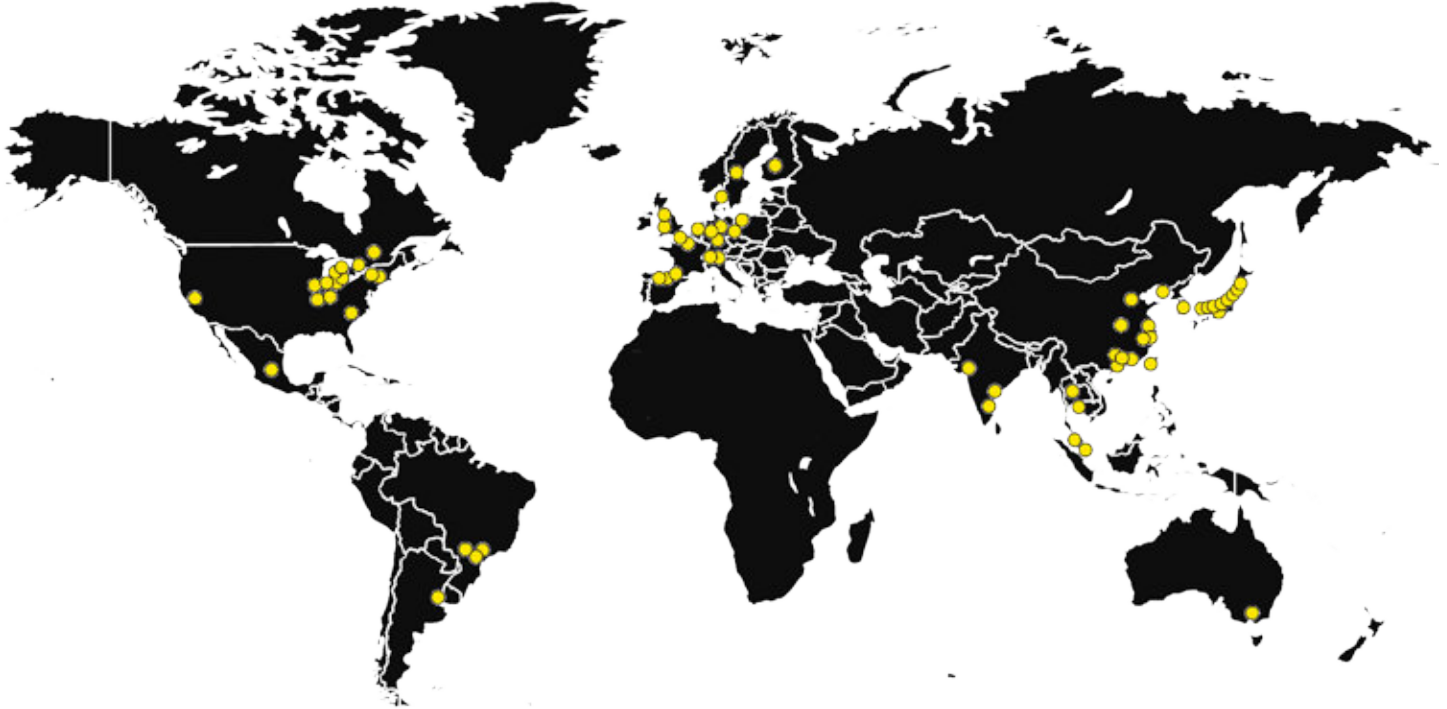


Spirallock® is a technologically superior fastening system ideally suited for threaded joint applications subjected to heavy shock and vibration.



STANLEY®

Engineered Fastening



STANLEY Engineered Fastening, a Stanley Black & Decker Inc. Company has been revolutionising fastening and assembly technologies for a variety of industries for more than 40 years.

For more information, please visit our website
stanleyengineeredfastening.com

Quick Links:

- ▶ **Our locations**
<http://www.stanleyengineeredfastening.com/contact/global-locations>
- ▶ **Request Information**
<http://www.stanleyengineeredfastening.com/econtact/request-information>
- ▶ **Resource Center**
<http://www.stanleyengineeredfastening.com/resource-center>



© 2017 Stanley Black & Decker, Inc., Rev. 11.2017

Autosert®, Avdel®, CribMaster®, Eurosert®, Hexsert®, JackNut®, Masterfix®, Nutsert®, POP®, ProSert®, Spiralock®, Squaresert®, Versa-Nut® and Well-Nut® are registered trademarks of Stanley Black & Decker, Inc. and its affiliates. Rimlex® is a registered trademark of Inlex Locking Limited. Data shown is subject to change without prior notice as a result of continuous product development and improvement policy. Your local STANLEY Engineered Fastening representative is at your disposal should you need to confirm latest information.